

 The content in this preview is based on the last saved version of your email - any changes made to your email that have not been saved will not be shown in this preview.



Dear Bruce,

Partnership for Cures has been busy these past few months. We have been doing everything from having a terrific funding partners meeting for the PFC Rockford Chapter, to being featured in a [Newsweek article](#). We are happy to share these updates with you so you can see how your support is actually touching the lives of patients RIGHT NOW!

PFC still needs your [support](#) so we can continue to provide funding for ground breaking research and help reach patients in 2 years or less! Together we can make a difference and provide a better quality of life for patients.

To help [make a difference](#) today please support PFC and its on going medical research projects. For a list of current and future projects please [click here](#).

Sincerely,



[Micha Siegel](#)

Vice President of Advancement

## PFC in

### **Newsweek**



Recently PFC was featured in a Sharon Begley's Newsweek column focused on what keeps better treatments from reaching patients.

**From Bench To Bedside Academia slows the search for cures**, June 15, 2009 issue.

Now that President Obama has almost all of his top science picks in place-from the Department of Energy to the FDA-the lack of an appointee for director of the National Institutes of Health is standing out like a creationist at an evolution conference...[full article](#)

## PFC Rockford Chapter



PFC Rockford has been busy lately. Last month there was a sponsored 50 person meeting at a donor's home to inform the Rockford community about PFC and its great work.

## In This Issue

[PFC in Newsweek](#)

[PFC Rockford Chapter](#)

[Longest Day of Golf](#)

[4 Bucks 4 Cures](#)

[Curing Diseases from MS to BrainTrauma](#)

## Donate Now

Become a philanthropic investor and help us fund innovative and inexpensive medical research with a gift of \$25, \$50, \$100.

Together we can help create fast, safe and effective treatments for those suffering from disease while they are still able to benefit!

Don't forget to check with your employer about matching charitable giving.

All gifts are tax deductible.

Click here to

[Donate Now!](#)

## Board & Staff

### Executive Board

Jerry Paris-Chair  
MW Automotive Enterprises, Inc

John Aalbregtse  
JA and Assoc. LLC

Steve Braun, CLU  
Northwestern Mutual Financial Network

Margaret Christie

Rockford Illinois Chapter

Also, PFC Rockford is hosting a Longest Day of Golf coming later in the summer and the first annual Gala dinner in the fall! Check your email for more information about both in the coming weeks and months.

**Longest Day of Golf**



PFC and its golfers are raising more than \$40,000.00 for prostate cancer research and we are half way there to our goal. **We still need your support!**

[Click here](#) to see a list of golfer who is playing and help them help fund prostate cancer research.

**4Bucks4Cures**

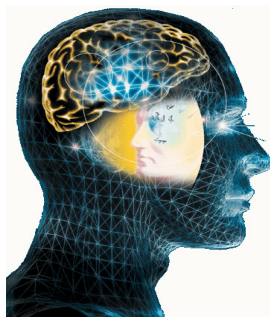


The new [4Bucks4Cures](#) initiative is a grassroots campaign that is driven by you and your friends. It is great way to help fund medical research to find better treatments and cures.

As we ask you to make a [\\$4 donation](#), email 4 of your friends and ask them to do the same. PFC will grow and continue to provide amazing research that directly impacts patients in 2 years or less. [Click here to start your 4Bucks4Cures](#)

[Initiative!](#)

**Curing Diseases From MS to Brain Trauma**



The Tactile Communication & Neurorehabilitation Laboratory or TCNL, is the leading medical research center helping patients regain brain and body function lost to diseases like MS, Parkinson's or brain trauma. TCNL researchers recently completed PFC Funded study that helped all 10 patients regain walking, balance and other lost functions.....[To learn more about the TCNL breakthrough clike here](#)

**Our Mission**

[Partnership for Cures](#) and our philanthropic investors raise money to find and manage research to create new uses for FDA-approved drugs, devices and other therapies that significantly improve length and quality of life for patients in two years or less.



Golan and Christie, LLC

Steve Goldsher  
Graphic Purchasing  
Solutions, LLC

Thomas Furst  
FSG Associates  
Mark Kosiek  
The PrivateBank and Trust

Kevin R. Krantz  
Stahl, Cowen, Crowley, LLC

Peter B. Kupferberg  
Gofen and Glossberg

Robert Miller  
Millico Investments

Dr. Susan ShermanMont  
Clare Animal Hospital

**Special Advisors**

Dr. Stephen Kron  
Chair of Science Advisory  
Board University of Chicago

Michael L. Lucas  
Chair of Corporate  
Foundation Advancement  
Leading Edge Investment  
Advisors

Neil Hirsch  
Chair of Development  
Committee IHRSA

**Emeritus Directors**

George Goldman  
Asset Partners

Judith A. Goldman  
Goldman Philanthropic  
Partnerships

**Senior Staff**

Dr. Bruce Bloom  
President and Chief Science  
Officer

Micha Siegel  
VP of Advancement

Jessica Langford  
Director of Development

[Forward email](#)

[SafeUnsubscribe®](#)

This email was sent to [bruce@4cures.org](mailto:bruce@4cures.org) by [bruce@4cures.org](mailto:bruce@4cures.org).  
[Update Profile/Email Address](#) | Instant removal with [SafeUnsubscribe™](#) | [Privacy Policy](#).

Email Marketing by



Partnership for Cures | 70 West Madison Street | Suite 1500 | Chicago | IL | 60602